



VERSATILE SCANNING IN AN ULTRACOMPACT PACKAGE

CANON IMAGE FORMULA DR-M140

Scan business cards and embossed plastic cards in addition to standard A4/LTR and A3 size documents. The DR-M140 is an ultra-compact scanner fit for virtually any document type and location.

Canon

*freedom
to focus*

DESIGNED FOR MAXIMUM ACCESSIBILITY AND FLEXIBILITY

With its highly reliable feeding mechanism and robust body, the DR-M160II delivers high-speed one-pass duplex scanning at 60ppm/120ipm in both colour and black & white. The high-capacity ADF ensures that it can make quick work of a large volume of documents. In short, this is an extremely versatile desktop scanner.

Comfortable high-performance scanning

Sturdy, compact, durable body

Inside the sturdy body, which is compact enough to sit comfortably on your desktop, the moving parts of the feed path, tray and upper unit have been rendered even more durable. It's designed to stay on top of high-volume scanning needs in a variety of business settings.

User-friendly operation panel

Start and stop scanning and perform other operations away from your computer with the operating panel.



Reliable feeding mechanism supported by solid technology

Reliable document feeding

Canon's reliable page separation mechanism provides smooth feeding of a wide variety of document sizes and weights. The DR-M160II also uses a new feed roller for even better paper feeding. Features such as Ultrasonic Double Feed Detection and Rapid Recovery further ensure dependability by making sure each and every page of a batch is scanned.

High-volume ADF

The heavy-duty Auto Document Feeder can hold up to 60 sheets.

Super-fast scanning

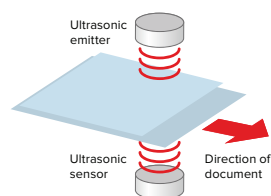
High-speed one-pass duplex scanning at 60ppm/120ipm allows efficient scanning of large volumes of documents. Highly reliable document handling is assured by means of a high-performance feed roller. It can handle all kinds of input from thick or thin documents to multi-sheet forms, cheques, embossed cards, and even A3/11" x 17" folio.

	Simplex (ppm)		Duplex (ipm)	
	B/W, Grayscale	Colour	B/W, Grayscale	Colour
200dpi	60	60	120	120
300dpi	60	50	120	120

*A4, Portrait, using USB 2.0

If a double feed is detected, the Retry and DFR functions allow scanning to resume.

If a double feed is detected at the feeder inlet, engaging the Retry Function



automatically reverses the path of the document so that it can be fed again and rescanned. Also, if a document has something like a photo or a tag stuck to it, scanning can be resumed either by selecting the DFR (Double Feed Release) in the double feed confirmation dialogue on the screen, or by pressing the DFR button on the main unit to indicate that it is not a case of double feed.

*DFR is only available in Continuous Scanning mode and if Double Feed Detection is set up.

DFR (Double Feed Release) button

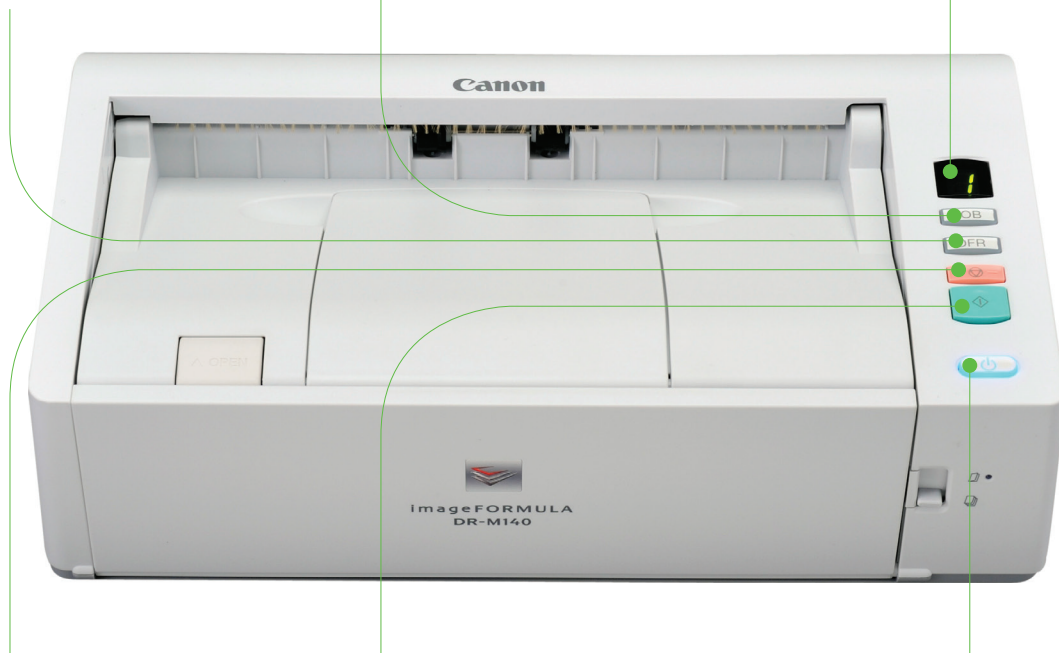
Lights when a document double feed is detected. When a document that includes sticky notes or pasted photos is detected as double-fed, press this button to allow the document to pass and resume scanning quickly.

Job select button

Selects a registered job. The selected job number appears in the Job No. Indicator.

Job No. Indicator

Displays the number of the currently selected job, in addition to displaying errors and other information.



Stop button

Stops active jobs.

Start button

Starts the selected scan job.

Power button

Turns on the scanner.

Easy Maintenance

Almost all operations can be performed from the front side of the scanner. The front panels open wide for easy access to replaceable parts and jammed paper. Consumable parts such as the feed roller unit and retard roller are simple and easy to replace.



Image Processing

Automatic Colour Detection

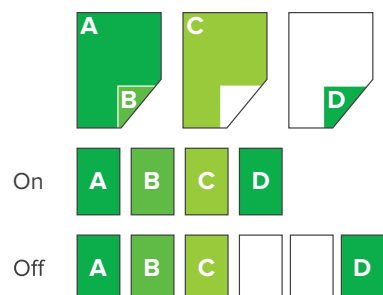
This function automatically determines which documents of a mixed batch should be saved in colour, grayscale or B&W, so it's no longer necessary to separate documents prior to scanning.

Auto Page Size Detection

Save the time and trouble of sorting batches by paper size. This function automatically detects the size of each fed document and ensures properly sized images for each page.

Skip Blank Page

Useful for scanning batches that include single- and double-sided documents, this function automatically removes unnecessary blank pages from the image file.



Specifications

Type	Desktop sheetfed scanner
Document Size	Plain Paper: Width: 50.8 mm to 216 mm (2" to 8.5") Length: 54 mm to 356 mm (2.12" to 14") Business Card: 50.8 mm x 85 mm (2.00" x 3.35") or larger Card: 54 mm x 86 mm (2.12" x 3.37") (ISO standard) Long document: Up to 3,000 mm (118.1") long (up to 2,700 mm (106.3") on 600 dpi)
Scanning Document Thickness	Plain Paper: Straight path: 27 to 255 g/m ² (7 to 68 lb bond) 0.04 mm to 0.3 mm (0.00157" to 0.0118") U-turn path: 27 to 128 g/m ² (7 to 34 lb bond) 0.04 mm to 0.15 mm (0.00157" to 0.0075") Business Card: 128 g/m ² to 380 g/m ² (34 to 80 lb bond), 0.15 mm to 0.45 mm (0.0075" to 0.0177") Orientation: Vertical feeding only Plastic Card: 0.76 mm (0.03") or less (1.4 mm (0.55") or less for embossed cards) Eject method: Straight path only Orientation: Vertical or horizontal feeding (only vertical for embossed cards) Loading capacity: 3 cards (non-embossed), 1 cards (embossed)
Feeding Capacity	Up to 50 sheets of 80 g/m ² or 10 mm stack (including curls)
Scanning Sensor	Contact image sensor
Light Source	LED
Scanning Side	Simplex / duplex
Scanning Modes	Black and White, Error Diffusion, 256-level Grayscale, Advanced Text Enhancement, Advanced Text Enhancement II, 24-bit Colour
Scanning Resolution	150 x 150 dpi / 200 x 200 dpi / 300 x 300 dpi / 400 x 400 dpi / 600 x 600 dpi

Scanning Speed*	B&W, Grayscale: Simplex: 200 dpi 40 pages/min. 300 dpi 40 pages/min. Duplex: 200 dpi 80 images/min. 300 dpi 80 images/min. 24-bit colour: Simplex: 200 dpi 40 pages/min. 300 dpi 40 pages/min. Duplex: 200 dpi 80 images/min. 300 dpi 80 images/min.
Interface	Hi-Speed USB 2.0
Other Functions	Folio scanning, Ultrasonic double feed detection, Double feed Release
External Dimensions (with trays closed)	313 mm (12.32") (W) x 181 mm (7.13") (D) x 93 mm (3.66") (H)
Weight (without AC adapter)	Approximately 2.6 kg (5.51 lb)
Power Requirements	AC100 to 240 V (50/60Hz)
Power Consumption	Scanning: Maximum 25 W In the sleep mode: Maximum 1.9 W With power switch OFF: Maximum 0.5 W
Noise	Not more than 56 dB
Operating Environment	Temperature: 10°C to 32.5°C (50°F to 90.5°F) Humidity: 20% to 80% RH

* Actual scanning speed may vary depending on your system configuration and PC. Specifications are subject to change without notice.

Microsoft, Windows, Windows Vista, PowerPoint and SharePoint are either registered trademarks or trademarks of Microsoft Corporation in the United States and/or other countries. Apple and Mac OS are trademarks of Apple Inc., registered in the U.S. and other countries.

ENERGY STAR and the ENERGY STAR mark are registered U.S. trademarks. Other company names and product names appearing in this brochure are the registered trademarks and/or trademarks of their respective owners.



Bundled Software

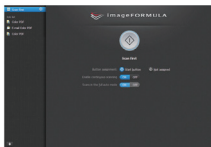
Capture OnTouch

Capture OnTouch

The dedicated software supplied with DR-Series scanners, CaptureOnTouch, has been redesigned with a newly streamlined interface for even smoother scanning operations.

Programmable scan jobs

Up to nine routine scan tasks can be registered as jobs, which can be accessed directly from the DR-M140's operating panel. The LED display shows the currently selected job number (1 to 9), and the job select button is used to scroll through them for easy push button access to frequently-used scan functions and settings.



Capture Perfect

CapturePerfect

CapturePerfect is Canon's own scanning application that makes it easy to get great scans straight out of the box. With a user-friendly interface, the software provides a wide selection of file-saving formats and file distribution options, such as searchable and encrypted PDF, Scan to Mail, Scan to Presentation, and more.



eCopy PDF Pro Office

eCopy PDF Pro Office instantly creates 100% industry-standard, universally viewable PDF files, and converts static PDF documents into editable files. eCopy PDF Pro Office enables the flexibility of a universal document format for higher productivity and seamless information exchange.



Kofax VirtualRescan Basic

The leading image processing software, Kofax VRS Basic, improves readability for multi-size documents of varying degrees of quality. Automatically straighten skewed pages without character degradation, optimise a document's brightness and contrast levels, and eliminate background noise and speckling.



canon.co.nz/business
0800 222 666

freedom
to focus